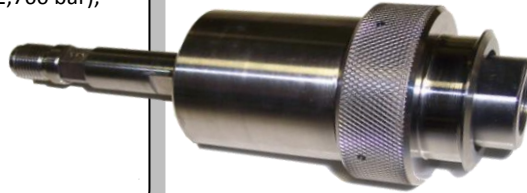


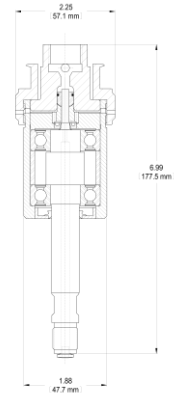
# Rotating Seals

The Model 953 RS Rotating Seal is Jotech's time-tested UHP rotating seal.

- Inlet Connection: 3/8" HP Female
- Maximum Pressure: 40,000 PSI (2,760 bar),
- Maximum RPM: 3000
- Available Configurations:  
Pneumatic Driven  
Hydraulic Driven  
Electric Driven  
Self Rotating

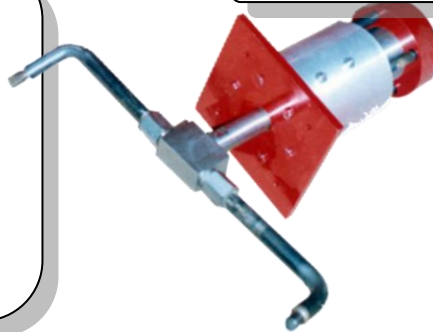


Model: 953

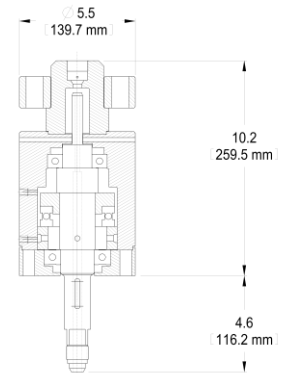


The Model 92 is Jotech's standard dump valve with an actuator, designed for automation applications

- Models:  
**923:** 30,000 PSI (2,070 bar), 30 GPM (113 L/M)  
Inlet Connection: 9/16" HP Female  
**922:** 20,000 PSI (1,380 bar), 50 GPM (190 L/M)  
Inlet Connection: 3/4" MP Female
- Maximum RPM: 2000
- Available Configurations:  
Pneumatic Driven  
Hydraulic Driven  
Electric Driven  
Self Rotating

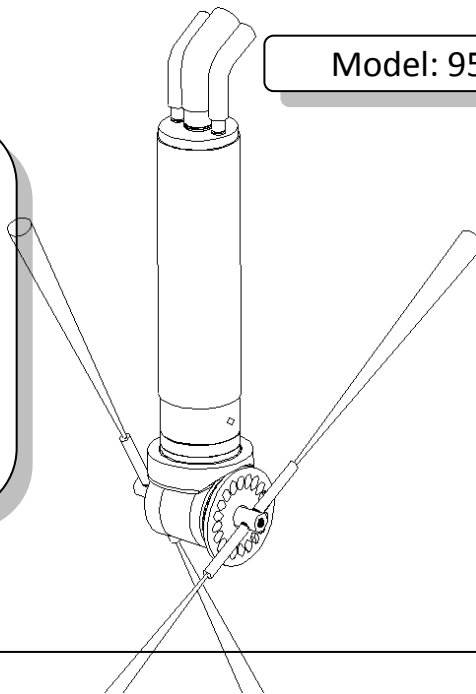


Model: 92



The model 959 is a pneumatic driven 3D rotating nozzle system.

- High Pressure Connections: 1" MP Female
- Maximum Pressure: 20,000 PSI (1,380 bar)
- Maximum Flow: 100 GPM
- RPM: 20 to 120 (controlled externally)
- 4-Jet or 2-Jet



Model: 959

